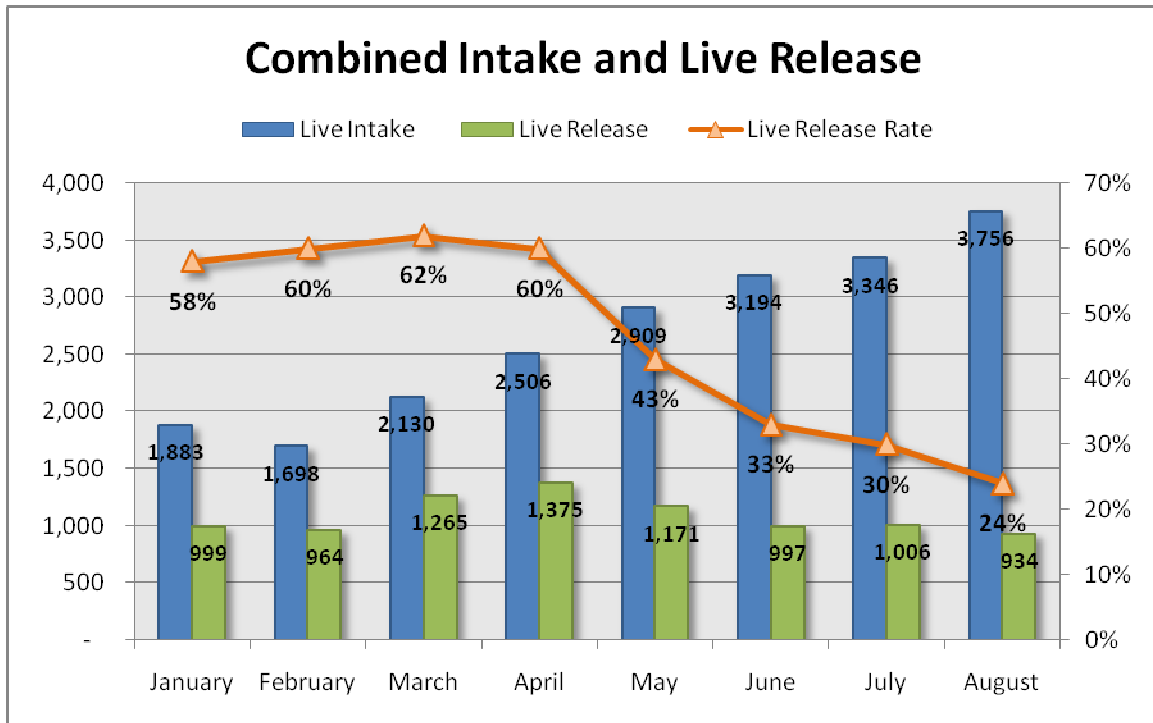


2009 Monthly Statistics for ACCT Animal Outcomes



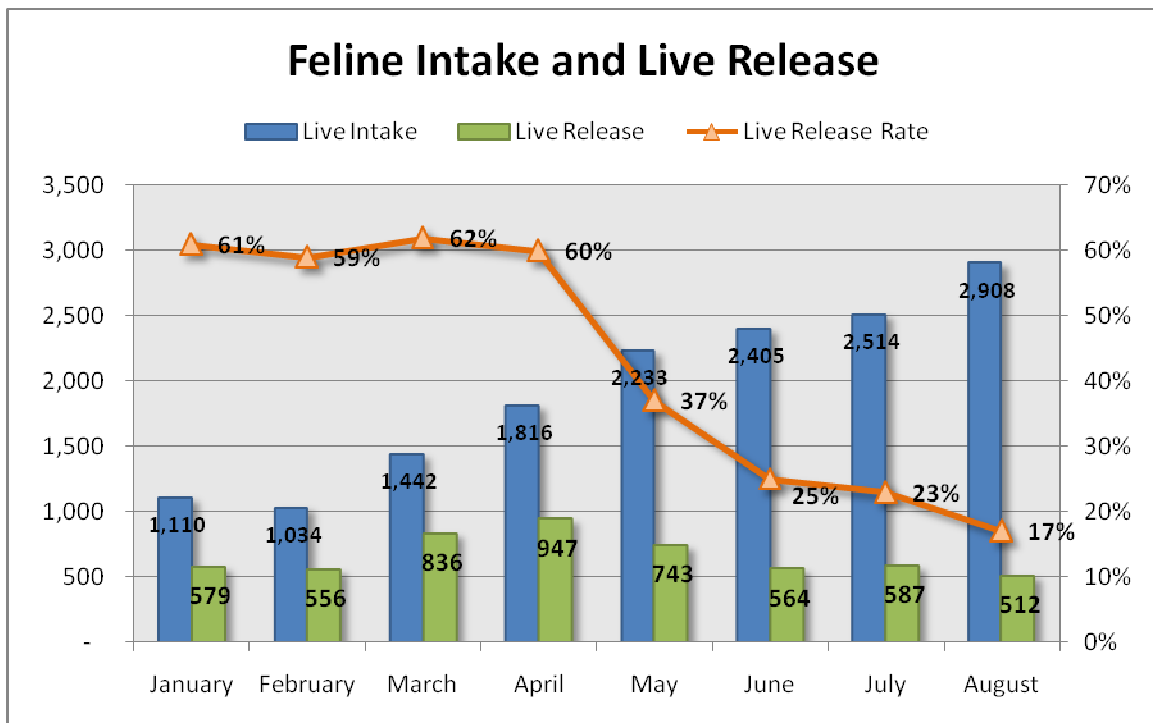
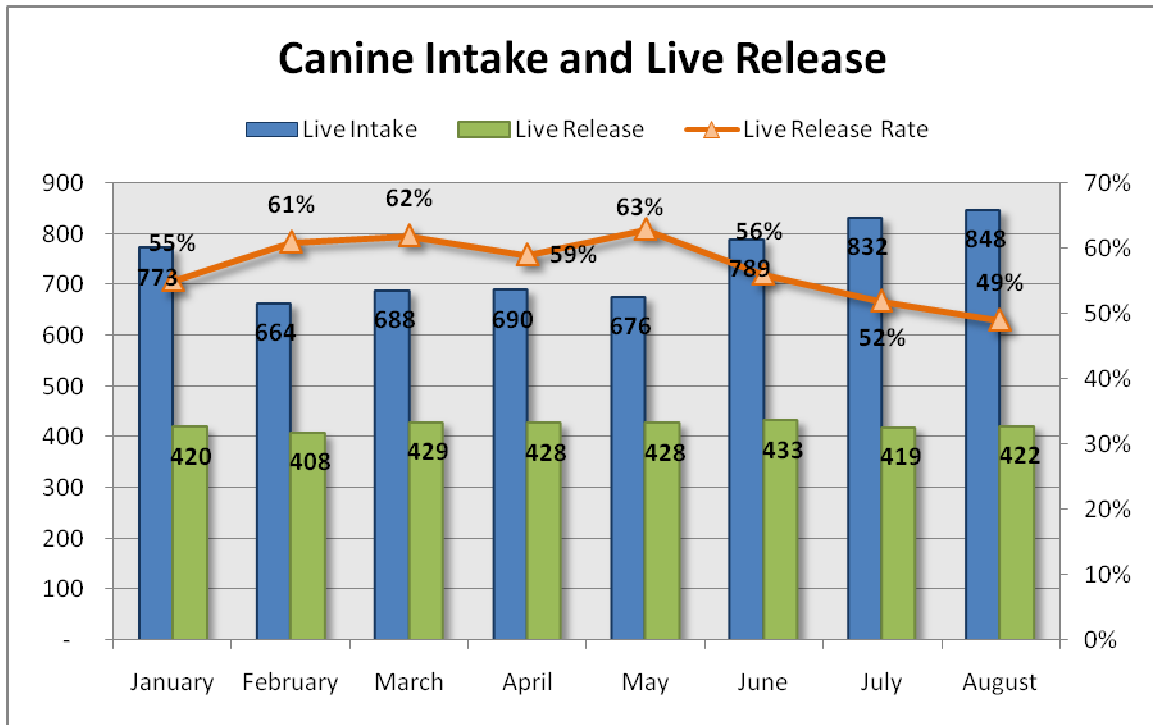
NOTES:

Monthly Statistics for ACCT Animal Outcomes includes only cats and dogs. For data including other animals (small mammals, exotics, wildlife, etc.) please see the attached spreadsheet.

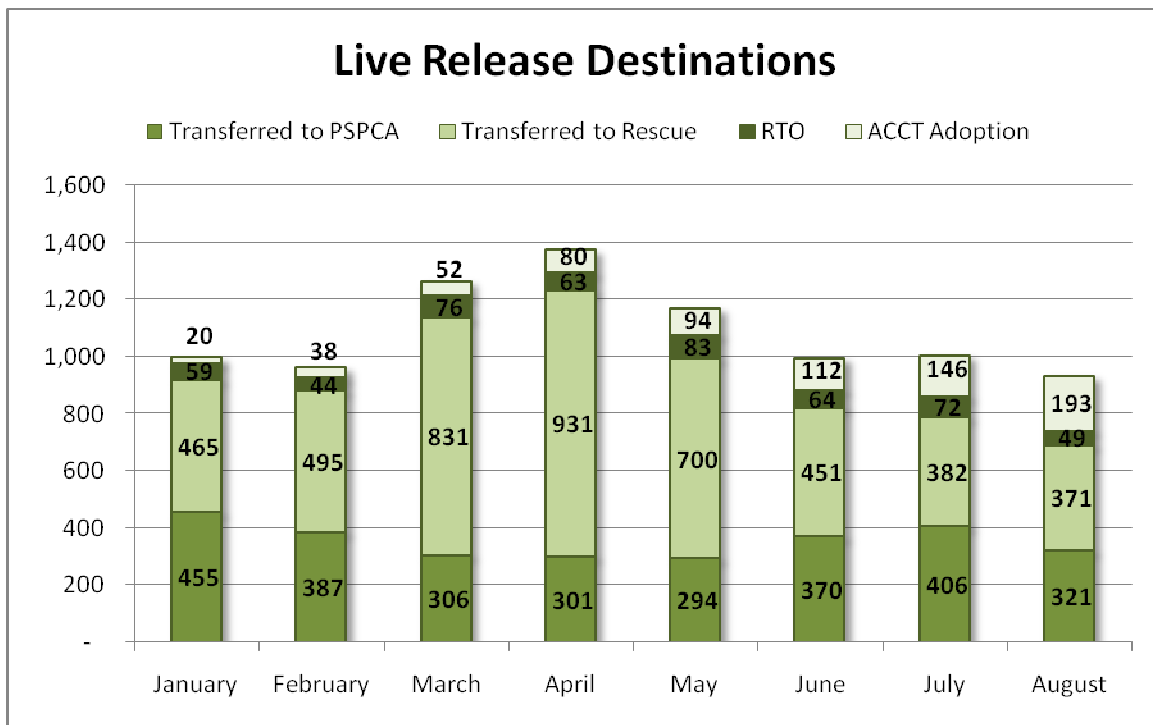
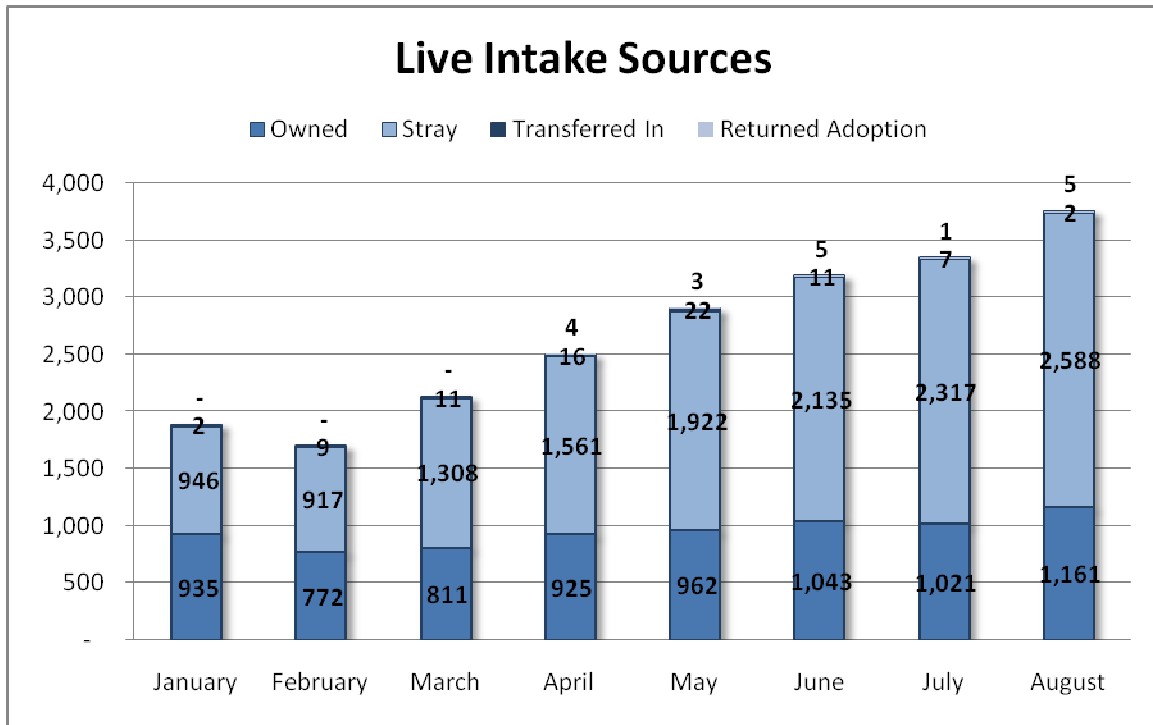
Live Release Rate, as dictated by the Asilomar Accords, the industry standard (see: <http://www.asilomaraccords.org>), is calculated by dividing Total Live Release (adoptions, outgoing transfers, and return to owner/guardian) by Total Outcomes. Additional data is available on the attached spreadsheet.

ACCT's Live Release Rate includes data on the disposition of animals transferred to PSPCA Headquarters.

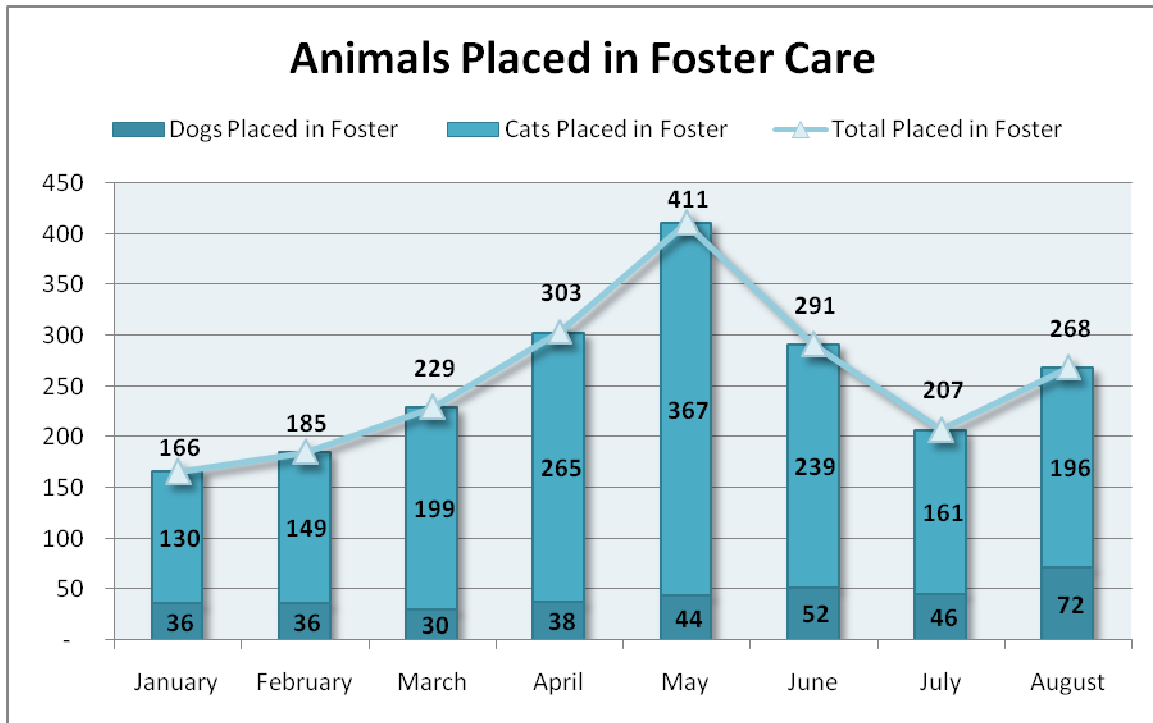
2009 Monthly Statistics for ACCT Animal Outcomes



2009 Monthly Statistics for ACCT Animal Outcomes



2009 Monthly Statistics for ACCT Animal Outcomes



The ACCT Foster Program is one of the many life saving arms of the PSPCA. The primary reason for foster care is to provide a temporary home for a potentially adoptable animal whose current condition is not manageable in a shelter setting and to alleviate overcrowding. ACCT receives more animals than there is space, and so moving animals into foster homes not only saves them, but also ensures that newly arriving animals have cage space.