

The Scoop



The Pennsylvania SPCA Newsletter for Animal Lovers

Summer 2008

Here We Grow - Expansion Projects Underway to Help PSPCA Serve More Animals

The PSPCA saw a 17 percent rise in adoption rates in 2007, due in part to increased adoption center hours, establishing a pit bull adoption policy and revamping the PSPCA's mobile unit with a brightly wrapped RV that holds adoption events throughout the Philadelphia region on a weekly basis.

"As we find forever homes for more animals, it has become apparent that we need to make physical changes to our headquarters so that we can better serve the hundreds of animals that are entering our doors each and every day," said PSPCA CEO Howard R. Nelson. The projects include a security kennel expansion, the construction of the new INN-Take Center and the creation of a dog park adjacent to the Philadelphia Adoption Center.



Security Kennel

"Our increased cruelty investigations have resulted in our caring for more dogs in our security kennel as they wait for owner surrender or court dates," said Director of Investigations George Bengal. "We've reached capacity in the current facility and need to expand the structure to provide temporary housing for the dogs we remove from dangerous situations." Currently the PSPCA's security kennel holds 35 dogs. The new structure will house additional dogs and six outside play spaces.

The INN-Take Center

Located next to the Philadelphia Adoption Center's Rehab Center, the "INN" is an isolation center for the dogs and cats the PSPCA takes in from Philadelphia Animal Care and Control Association (PACCA) and other shelters. The facility, which holds 100 animals,

has dedicated dog and cat rooms with separate HVAC systems where PSPCA vets treat and rehabilitate sick animals before they are placed for adoption. The entire INN project was made possible by a generous donation.

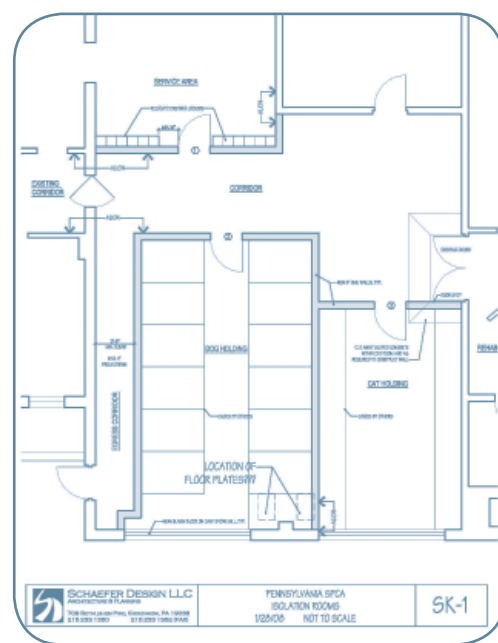
"The new, larger INN-Take Center allows us to

provide medical treatment other shelters cannot offer to even more cats and dogs. The facility also allows us to isolate animals that are currently sick, thus not exposing dogs and cats currently residing at the PSPCA to serious illness," said Nelson.

The creation of the INN has allowed the PSPCA to transform its previous intake/isolation room into a feral cat surgical center in partnership with the Philadelphia Community Cats Council's Trap-Neuter-Return-Management program.

Dog Park

Construction is planned for the PSPCA's dog park in the vacant lot next to the Greenhouse at the Philadelphia Adoption Center. The park will feature six 25-foot-by-75-foot dog yards; a 75-foot-by-100-foot multipurpose



Artist's rendering of INN-Take Center

Continued on page 4...



Pennsylvania Society for the Prevention of Cruelty to Animals

THE PENNSYLVANIA SPCA
CELEBRATING MORE THAN
140 YEARS FIGHTING ANIMAL
CRUELTY ABUSE and NEGLECT

MISSION STATEMENT

The Pennsylvania SPCA is dedicated to rescuing animals from abuse and neglect, providing lifesaving care and treatment, guaranteeing a home for every adoptable animal, and reducing pet-overpopulation through low-cost spay-and-neuter clinics and public awareness initiatives. Through these efforts, we prevent cruelty towards animals and promote respect for their welfare, thus enhancing the lives of people and their companion animals throughout the state of Pennsylvania.

PHILADELPHIA
HEADQUARTERS SHELTER
AMBULANCES AND AGENTS

Call 866 601 SPCA or email
cruelty@pspca.org to lodge cruelty
complaints. Emergencies handled 24
hours a day.

RUTHERFORD MEMORIAL
HOSPITAL HOURS

Monday-Friday 9:00 to 3:00
Saturday 9:00 to 1:00
Ravindra Murarka, D.V.M.
Director of Animal Health

ADOPTION CENTERS

Route 6, Wellsboro - 570 724 3687
Route 322, Centre Hall - 814 364 1725
Bloom Road, Danville - 570 275 0340
Godfrey Ridge, Stroudsburg - 570 421 6761
Route 706, Montrose - 570 278 1228

Official registration and financial information on the Pennsylvania SPCA may be obtained from the Pennsylvania Department of State by calling toll-free within Pennsylvania, 800 732 0999. Registration does not imply endorsement.

Issued quarterly to its members by the Pennsylvania Society for the Prevention of Cruelty to Animals, 350 E. Erie Avenue, Philadelphia, PA 19134.

The Inside Scoop

Dear Friend,

In the past year, the PSPCA has experienced significant growth. For example, adoptions were up 17 percent in 2007; our humane officers seized more than 1,000 animals in cruelty and neglect cases during the first quarter of the year; and through our Good Home Guarantee (which launched last December), we've taken in and found homes for many dogs and cats that could no longer be cared for by their owners, including those whose homes have been foreclosed.

As we continue to serve more of Pennsylvania's animals in need, it has become necessary to expand our programs. This issue of *The Scoop* highlights the measures we are taking to improve the services we provide across the state. At our Philadelphia headquarters, we have opened the INN-Take Center, a facility with dedicated dog and cat rooms used for examining and treating the hundreds of animals we transfer to our Adoption Center from shelters across the city. And plans are underway for an addition to our security kennel and the creation of our dog park—an outstanding space that will allow our dogs to exercise in the fresh air on a regular basis.

I am pleased to announce that we have reopened the Stroudsburg Adoption Center. Staffing issues have been resolved and now residents of Monroe County can once again adopt from the renovated Center seven days a week.

Our expansion efforts also include strengthening the reach of our humane officers throughout Pennsylvania. In March, our agents conducted the biggest raid in PSPCA history at the Tiger Ranch Cat Sanctuary in Western Pennsylvania. We removed hundreds of domesticated and feral cats from deplorable conditions. These cats are currently being treated by PSPCA vets and staff at our temporary animal hospital in Clarion County. Because a majority of the neglected animals were severely ill, the cost to treat them has been great. If you would like to help with our efforts to care for these cats, please contact our Development Director Rachel McCrystal at 215-426-6304 ext. 217, or rmccrystal@pspca.org.

The PSPCA would not be able to undertake expansion projects such as these without the support of our generous friends, loving new pet adopters and dedicated staff. I am looking forward to sharing with you the stories of our continued growth and success.

All my best,

Howard R. Nelson
Chief Executive Officer



PSPCA Rescues Hundreds of Cats at Tiger Ranch

"She described it as a sanctuary. I describe it as just pure hell." Those were the words of PSPCA CEO Howard Nelson as he stood outside Tiger Ranch Cat Sanctuary in Tarentum, Pa., site of possibly the biggest anti-cruelty raid in state history.

On March 13, with a warrant obtained from the Allegheny County District Attorney's Office, 120 animal welfare experts from the PSPCA and the ASPCA® (The American Society for the Prevention of Cruelty to Animals®) searched the 28-acre property located 22 miles northeast of Pittsburgh on the Allegheny River. What they found was disturbing — hundreds of cats living in squalor in multiple buildings, suffering from a myriad of serious illnesses and disease. Hundreds more cats were found dead in deep freezers and burial pits located on the Tiger Ranch property. Owner Lin Marie (aka Linda Bruno) was arrested and charged with multiple counts of animal abuse.

"This was by far the worst case we've ever encountered," said Nelson. "There were cats fighting over one food dish and water bowl, dead cats in litter boxes and extremely ill and dying cats living with seemingly healthier cats."

The cats had been taken to Tiger Ranch by their owners and animal rescues, in the hope that they would be adopted or able to live out their final days in peace. According to vets at the scene, the cats, most between the ages of just a few months to four years, were suffering from upper respiratory conditions, skin wounds, abscesses, dehydration, malnutrition, dental problems, eye and bladder infections and other conditions that could have been resolved with medical care. In addition to cats, several dogs were seized at the scene. "We also found other animals, including chickens, a goat, and horses forced to stand in their own waste, and removed them as well," said PSPCA Director of Law Enforcement George Bengal.

Tiger Ranch was brought to the

attention of the PSPCA by Dr. Becky Morrow, Carolyn DeForest, Dr. Rebecca Reid and Deborah Urmann. The group conducted an undercover investigation, including secret video footage taped by Urmann, a humane officer volunteering for Tiger Ranch, and gave its report to PSPCA officials.

"The video Ms. Urmann shot was horrifying," said Nelson. "We could not ignore the abuse that was taking place at Tiger Ranch—we had to step in because other agencies would not."

Many cats had died before PSPCA and ASPCA officials reached the scene; others were so sick that they had to be humanely euthanized immediately. Approximately 400 surviving cats were taken to the PSPCA's Clarion County branch, which was reopened specifically for the treatment of the Tiger Ranch cats. The cats received extensive medical treatment from PSPCA veterinarians and have been quarantined indefinitely during their treatment period. "We are hopeful that these cats will be available for adoption in the future," said Nelson.

The cost the PSPCA incurred to care for the hundreds of neglected cats is significant. In the days following the raid, foundation and public support for the rescue was tremendous, from concerned citizens contributing funds to help cover the cats' medical treatment, to organizations and veterinarians donating supplies and their time. Funding was also provided by the ASPCA, WalMart, PetSmart Charities and Petco. "The plight of the Tiger Ranch cats touched people from across the state," said PSPCA Director of Development Rachel McCrystal. "From blog postings, to calls and letters, it was obvious that Pennsylvanians were deeply affected by this story." The PSPCA has established the Tiger Ranch Fund for the care of the rescued animals. To contribute, visit www.pspca.org/donate, call 215-426-6304, ext. 217 or send checks to The Pennsylvania SPCA, 350 E. Erie Avenue, Philadelphia, PA 19134. Indicate Tiger Ranch on your gift.

STAFF

Howard Nelson
Chief Executive Officer
215.426.6304 ext. 214
hnelson@pspca.org

Elaine Skypala
Chief Operations Officer
215.426.6304 ext. 242
eskeypala@pspca.org

Lisa Rodgers
Director of Outreach Programs
215.426.6304 ext. 230
lrodgers@pspca.org

Wendy Evans
Shelter Manager
215.426.6304 ext. 211
wevans@pspca.org

Ray Little
Director of Adoptions, Rescue and Foster Care
215.426.6304 ext. 240
rlittle@pspca.org

Connie Harris
Hospital Manager
215.426.6304 ext. 264
charris@pspca.org

Jacques Page
Chief Financial Officer
215.426.6304 ext. 216
jpage@pspca.org

Carol Siegrist
Director of Training and Animal Behavior
215.426.6304 ext. 259
csiegrist@pspca.org

Rachel McCrystal
Director of Development
215.426.6304 ext. 217
rmccrystal@pspca.org

Dr. Ravindra Murarka
Director of Animal Health
215.426.6304 ext. 245
rmurarka@pspca.org

Heather Redfern
Director of Public Relations
215.426.6304 ext. 213
hredfern@pspca.org

Stacey Plattenberger
Volunteer Coordinator
215.426.6304 ext. 244
splattenberger@pspca.org

Here We Grow continued from page 1...



Artist's rendering of the completed dog park

the dog park, or any of the other projects, contact Director of Development Rachel McCrystal at 215-426-6304, ext. 217 or rmccrystal@pspca.org.

area for obedience training classes and exercise; a brick-lined walkway from the Greenhouse to the park; benches; and shade trees.

"Not only will the park allow our dogs to get fresh air and outdoor exercise throughout the day, it will give us a wonderful area to allow potential adopters and their dogs to meet new friends in a more natural setting," said Director of Adoptions Ray Little.

The dog park will be funded entirely by PSPCA supporters. To support the project, the PSPCA is selling bricks for the walkway at \$150 each and benches with plaques for the yards at \$1,500. To contribute to

COMING SOON: *Animal Cops: Philadelphia* Starring the PSPCA

Don't adjust your TV — that is the PSPCA law enforcement team you will see on Animal Planet's *Animal Cops: Philadelphia* program, set to air later this summer.

Animal Cops: Philadelphia, the latest installment in the *Animal Cops* and *Animal Precinct* series, follows the PSPCA humane officers as they work to protect animals in need in Philadelphia and across the state.

"For several years, Animal Planet has used compelling television to tell the stories of the heroes who combat

animal cruelty. Now we're delighted to be able to continue that tradition in Philadelphia with the men and women of the PSPCA," said Marjorie Kaplan, president and general manager of Animal Planet Media.

In addition to capturing rescues and raids at the scene, the production crew has followed the stories of the animals, from the time they enter the shelter, throughout their medical treatment and the adoption process. They have also visited the forever homes of some of the dogs to document how they are adjusting to their new families.

"We are thrilled that we were selected to participate in *Animal Cops: Philadelphia*. The program has brought the issue of animal cruelty to the forefront in the cities that have been previously featured, New York, Detroit, Houston and San Francisco," said PSPCA CEO Howard Nelson. "Our agents and vet staff do amazing work to save abused and neglected animals. Being able to tell these stories to a national audience is an outstanding opportunity for the PSPCA."

Filming for *Animal Cops: Philadelphia* began in January and will continue throughout the fall. Check your local listings and visit www.pspca.org for the show's premiere airdates.



Some of the stars of *Animal Cops: Philadelphia* - The PSPCA Agents. Top (left to right): Wayne Smith, Elizabeth Sorel, Chris Martin, George Bengal and Leonard Knox. Bottom (left to right): Juan Martinez, Ashley Mutch and Gregory Jordan

Benefits Abound for PSPCA Members

When you become a member of the PSPCA in 2008, not only are you helping thousands of animals in need of new homes, you are also eligible to receive discounts on services, merchandise and food at a variety of participating Greater Philadelphia businesses that support the work of the Pennsylvania SPCA or are pet-friendly and offer humane menus.

When you show your 2008 PSPCA Membership card, you can now enjoy:

- 10% off the total bill at Manayunk Pooch Scoochers and a free dog walk
- 15% off an entrée at Philadelphia Fish & Co.
- 15% off any item (except food and treats) at In the Doghouse
- 10% off the total lunch bill at La Terrasse
- 10% off the total bill at Solaris Grille
- 10% off any fair trade item at Mugshots Coffeehouses
- A free nail trim with purchase of a bath and a free day care assessment with enrollment at Central Bark Doggy Daycare
- 10% off any item at Bone Appetit.
- 50% discount on the initiation fee with the purchase of an annual membership at 12th Street Gym.
- 20% off first order from SniffNFetch.com from Doggie Style
- 10% discount on any item at Rittenhouse Square Pet Suppliers
- Free registration and 15% off the first month's bill at P.S. PET SIT
- Free soup or dessert with \$10 purchase at Tavern 17

These discounts are available to PSPCA members at all levels. Look for the PSPCA decal at your favorite shops and patronize those businesses that support our mission. Additional discounts for PSPCA members living near our rural Adoption Centers are coming soon. Businesses interested in offering benefits to PSPCA members or individuals wanting to become members should contact Emily Simmons, Development Associate at (215) 426-6304 ext. 265.



Stroudsburg Adoption Center Reopens Fulltime

The PSPCA's Stroudsburg Adoption Center, which had been operating on a limited schedule since January, is once again open seven days a week.

"The staffing changes and renovations we've made will help us to better serve the more than 1,500 abused, abandoned and neglected animals we care for at the facility each year," said Chad Weaver, PSPCA Director of Branch Adoptions.

Under the guidance of new Team Lead Shirley McClanahan, the Stroudsburg Adoption Center is open Sunday-Tuesday and Friday-Saturday from 11:30am - 4pm and Wednesday-Thursday from 11:30am - 7pm. For more information, call 570-421-6761.

Phillies to Host Second Annual Save a Pet at the Park Day

Join the Pennsylvania SPCA at Citizens Bank Park for the second annual Save a Pet at the Park Day. Last year's event, which featured pet adoptions, a silent auction and autographed ball grab bags raised \$33,000 for the PSPCA's mission to help animals in need. This year's event will benefit the PSPCA Dog Park.

For event date and more details, visit www.pspca.org



Heal, Ashley, Heal

When PSPCA Humane Officer Wayne Smith brought Bernie, as she was called by PSPCA CEO Howard Nelson, to the Philadelphia Adoption Center in January, she was suffering from horrific wounds to her head, ears and back.

A nine-year old German Shepherd mix, Bernie was burned when her owner threw a pot of hot cooking oil out of her home's back door, where Bernie lay waiting for her dinner.



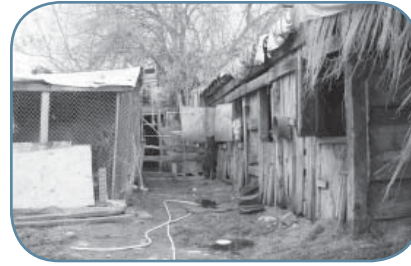
"Due to the severity of her injuries, it's amazing that she survived," said Smith, who convinced Bernie's owner to surrender Bernie and a Chihuahua she owned, to the PSPCA where Bernie could receive the extensive treatment and attention she would need to make a full recovery.

And what a recovery Bernie made! Under the careful eye of PSPCA vets

and staff and a belly full of special chicken and rice dinners prepared by Nelson, Bernie healed quickly and was placed for adoption. She even traveled to Harrisburg with Nelson, when he spoke in favor of Pennsylvania's proposed anti-tethering bill.

In March, Ashley, as she is now known, went home with her new forever family. Look for this special girl's story on *Animal Cops: Philadelphia* this fall.

Fletcher Street Stables Demolished



After years of complaints from neighbors and investigations by PSPCA Humane Officers, the Philadelphia Departments of Health and Licenses

and Inspections shut down dilapidated stables at 26th and Fletcher Streets in North Philadelphia on March 5. Owners were given 24 hours to 30 days to find appropriate housing for their horses. PSPCA Director of Animal Health Dr. Ravindra Murarka and humane agents were on the scene as stables were condemned to examine and remove any horses deemed too sick to remain at the facilities.

"We removed two ponies that were in need of immediate medical attention," said Murarka. "One horse was suffering from thrush and both were caked with mud and appeared to be underfed."

"The conditions of the 'stables' were atrocious," said PSPCA Director of Investigations George Bengal. "There was exposed wiring, asbestos hanging from ceilings, three-to-four-foot high piles of manure and rats running rampant. It's amazing that we haven't found more dead horses here." In fact, PSPCA agents were called to investigate three dead horses on the city-owned property. No charges have been filed in that case, which remains open.

Demolition of the stables began on March 7. The PSPCA assisted horse owners that needed help in transporting their horses to their new homes.

"None of the horse owners should have been surprised at the outcome of this case," said Bengal. "They had been warned time and time again to improve the facilities and take care of their horses. It was only a matter of time before something tragic took place on Fletcher Street."

PSPCA Unveils New Café Press Merchandise Store

Wear your support for the PSPCA on your sleeve – literally! We've launched a new Café Press merchandise store featuring PSPCA logo apparel, mugs, stickers, magnets, totes and hats. Keep warm and comfy in a PSPCA hoodie, take your PSPCA canvas tote to the grocery store, fill a PSPCA mug with dog treats for the new pet parents down the street or purchase PSPCA stickers and start your own PSPCA Street Team! A percentage of every purchase you make will directly benefit the animals in our shelters. Visit www.cafepress.com/pspcastore today to purchase items for yourself or as a gift for the animal lovers in your life. Happy shopping!

Tribute Gifts

MEMORIALS*

Anne Ruggles
Ms. Marie F. Doak
Mr. Frederick E. Schea
Ms. Doris Blackburn
Ms. Rachel Hoffman
Anthony Junktis
Mr. Leroy Crockett
Audrey McCurdy
Ms. Jean Snook
Barbara Buch
Ms. Maryann Sabara
Ms. Elizabeth Carr
Beloved Pets, PJ & Oliver
Ms. Sonya L. Peterson
Beloved Tupper
Mr. and Mrs. Edward Learn
Bernard Segal
Ms. Sunny Goldfinger
Blackie
Mr. and Mrs. Howard R. Boehringer Jr.
Blackie
Mr. and Mrs. Howard R. Boehringer Jr.
Bob Freeh
Ms. Karen Wood
Bullet
Jill Crandley
Carol D. Kirkner
Ms. Cheryl Bressler
Casey
The Lacorte Family
Casper
Mrs. Leigh-Ann Fry
Catherine Fedeli
Ms. A. W. Fedeli
Cathy Fedeli
Mrs. Terri Fedeli
Charles D. Diorio
Ms. Helen Van Osten
Charles J. & Helen Shy
John Fiumecaldo
Charlie
Jennifer Harbert
Choo Choo
Mrs. Adorina C. Vernet
Clayton Mertz
Ms. Georgann Stewart
Coco Semet
John Semet
Conway Dalosie
Ms. Laury C. Semetti
Daisy
Julie, Katy, Kim, Lindsay & Monique
Donna Farmer
Patricia Muff
Donna M. Weitman
Mr. Jim Murphy
Dr. William L. Dorrance
William Daly
Ebby
Ms. Anne Marie Dill
Elaine Sanders
Mr. Robert B. Mundy
Eleanor Romanyshyn
Mr. Gaye Wall
Elizabeth Woodruff
Ms. Sherri Hogan
Mr. James T. McGlinsey
Mrs. Audrey A. Cavanaugh
Mr. Herb Scherrer
Elsie Dorsey
David and Maria Ford
Esther Craig
Ms. Kimberly Vincent
Ms. Margaret Mooney
Mr. William Clatton
Jeannie & Larry Connor
Wendy Piascik
Jessica, Devon, Grace
Fergie Coletta
Travis Cos
George
Ms. Sara C. Rampon
George Defrain
Ms. Pat Kriner
George H. De Frain 2nd
Ms. Jayne Burt
Gertrude Reich
Mr. R. Reich Jr.
Gideon
J. Blaine
Ginger and Dino
Mrs. Susan M. Pivonski
Gizmo
Ms. Debra-Sue Strauss
Gretchen
Mr. Darell Rice
Grundy Steiner
Terry Sisk Graybill
Harriet E. Lance
Ms. Marilyn L. Griffith
Heidi
Ms. Julia F. Hix
His Wife Mildred
Mr. George J. Giberson
Hobbs (cat)
Ms. Janet Albert
Howard Vanderpool
Mr. John McDonald
Janette Johnson
Ms. Joann Stilwell
Mr. and Mrs. Robert L. Smith
Janice B. Lynch
Mrs. Frances Casadonte
Joan Seidel
Ms. Lisa Poli
Ms. Norma Poli
Ms. Erin D. Eichenhofer
Ms. Betty Houck Ricca
Mr. Robert M. Lutz
Ms. Joan A. Kornse
Mr. and Mrs. Merle L. Johnston
Ms. Ann M. McCloskey
Mr. and Mrs. G. Frank Affleck
Jeff and Jen Zielinski
Joan T. Campbell Seidel
Printer's Trade
Ms. Dorothy Poli
Ms. Cindee Goldberg
Deluca
Joan T. Seidel
Ms. Lisa Sabatina
Mrs. Margaret M. Eichenhofer
Ms. Beverly Cohen
Ms. Jean Ann Krupinski
John T. Donahue
Mrs. Mary Catherine Sisca
Kaiser
Jane, David, LuLu & Rhett
Karen Jean L. Corrigan Allen
Ms. Jeanette Conklin
Kelly, Murphy & Jake
Daddy Dog
Kelsey Frake
Tony, Beth & Smoky
Kenneth Friend
Ms. Jennifer Johnson
Laureen McKenna Vargas
Ms. Carol Kenney
Ms. Carol Stefankiewicz
Mr. Thomas Vargas
Mr. William M. McKenna
Ms. Andrea B. McKenna
Mr. Timothy McKenna
Ms. Marie Stefanowicz
Ms. Theresa Vignola
Ms. Marian Von Stranzke
Ms. Eline Colosi
Mr. Joseph Lamplugh
Ms. Patricia Ann Terivery
Mr. John Bielec
Ms. Dolores Dougherty
Lewis Rice, Sr
Ms. Denise Wallace
Lorraine Bard
Sean, Joan & Connor Lenahan
Lotte Mainzer & Pumpkin
Ms. Sandra Wynns
Lucy Confer
Jenny B.
Mandy and Austin
Erica Morgan
Margaret Galiano
Mr. Joseph Lombardo
Mr. Edward C. Lombardo
Sunshine Club, Union Mill
Shoprite
Marilyn Carraccio
Ms. Christine M. Tartaglione
Columbus Speech and Hearing
Center
Mary Feingold
Mr. John Marino
Mr. John Martino
Mr. Leonard Davidson
The Greenhouse Condominiums
Association
Mary Marcelonis
Mr. Edmund Lloyd
Mary Shaefer
Mr. Louis J. Klein
Max Bogush
Mr. Mark Blomfield
May Carvascio
Mrs. Helen Robinson
Mazel
Mr. Stephen J. Berko
Mike Royer
Mr. Donald Bierly
Miss Dale Lynn Brewer
Ms. Jane L. Usher
Molly
Joe, Leigh Ann, Joey, Nick, Ava
and Katie
Mrs. Woodruff
Ms. Karen Sittler
Mrs. Feingold
Mr. Albert J. Boco
Mrs. Jean Giordano's mother
Ms. Harriette Stein
Mrs. Woodruff
Fox Chase Post Office Employee
My Mother Rita Tobin
Ms. Patricia Gabor
Nancy Ruggles
Ms. Kathy Lee Albert
Nancy T. Hassett
Ms. Jennifer Glasgow
Nanett B. Taylor
Mr. and Mrs. James J. Silimeo
Mr. Marc D. Tepper
Ms. Noelle C. Skuse
Nelson Blank
Ms. Leah P Beerhalter
Otto A. Grieshaber
Mr. and Mrs. William Clark
Our Cats
Ms. Diane M. Mazzei
Page
Ms. Julia F. Hix
Pat Riley
Ms. Jill S. Schneider
Patrick Riley
Ms. Carmela Deleo
Mr. and Mrs. Leo H. Medernach
Mr. Michael J Medernach
Ms. Doris R. McDermott
Mr. Joseph B. Santella
Ms. Jean Kosich
The Hellers
Mark Palacio, Ryane Gouveia,
Matthew Lumer, Colleen Gage,
Michael Hancock, Patricia
Hancock
Paula Weber
Ms. Joseph & Janet Leipert
Pearl
Mona, Michael, Charlotte, and
Woodley Berman
Pepperidge
Janice Broder
Pino
Multi-Mom
Reese Wengenrath
Mr. and Mrs. R. J. Wasilewski
Rita Tobin
Ms. Patricia Gabor
Rose Marie Peicker
Mr. Leonard F. Simon
Roseanne Metz
Sally Strickler and Family
Roy Beazz
Mr. Murray Glickman
Roy Fuiman
Ms. Julie Sokoloff
Ms. M. Catherine Godwin
Mr. Andrew Harme
Ms. Stephanie Metter
Ms. Gwen Roberta Bland
Ms. Ilene Berman
Mr. and Mrs. Allan M. Witman
Ms. Brenda J Elkin
Mrs. Carrie Jacobson
Freddi & Larry Goldstein
The Geffen Family
Rudy
Chris Allen
Rusty and Scampy
Ms. Beth Folcik
Saul Brea
Ms. Ellyn Katz Levy
Seamus
Ms. Brenda Vorce
Sherry
Barbara Vanore
Simone Chervallier Bacon
Ms. Ann W. Larson
Snickers
Mr. Fred Faig
Sparky 1 & 2
Jimmy & Maggie
Spenser
Dr. Kathleen R. Donegan
Sprite
Ms. Maria Papadoulos MD
Susan De Masi-Reichert
Ms. Carol I. Lowicki
Susan M. De Masi-Reichert
Ms. Helen Richardson
Tanya Lynn Baker
Mr. and Mrs. John Lopez
Tara Lee Mosco
Theresa Sawkenas
Teddy, Her Pet
Ms. Lissa Sherron
Tess
Ms. Debra A. DiCicco
Tippy
Ms. Mary Lou Adams
Tonya Martin Baker
Ms. Ruth Vondorpowski
Tootsie
Ms. Harriette Stein
Vernon Kaiser, Sr.
Mr. Alfred Ledder
Violet M. Mazzeo
Mr. and Mrs. Dean Hurst
Ms. Patricia Ferguson
Ms. Patricia S. Baruffi
Ms. Patricia Ferguson
Wolfie Warkala
Mr. Sidney Rubin
Delmonte
Ms. Carolyn Jepson
Donna Brumberg
Ms. Dorothy A. Bogusz
Duke
Mr. Mark Blomfield
Eden Roth's Birthday
Ms. Peggy J. Truitt
Mr. Robert R Fossett
Mr. Bryan J. Gormley
Mr. Mark Haftel
Mr. Roger A. Roth
Etana
Ms. Sonya L. Peterson
Henry Korman
Mr. Kevin Meidt
Judy Cody
Curtis Roller
Theo Wood
John Vernon
His friend Braden
Hon. Judge Leslie Fleisher
Mr. Anthony R Masino
Jane Zimmerman's Retirement
Central City Region
Psychologists
Jill Ripkin
Ms. Mara Schiffman
Joe and Mary Albertus
Mr. George Tyndall
Joe and Stanley Ives
Kiley Baun
John & Mary Catherine Knoll
Ms. Catherine E. Lendrim
Kitty
Ms. Catherine Delany
Lambchop
Liam Sfaxi
Lucy (a PSPCA adoptable dog)
Irene Buhalo
Marco
Ms. Lissa Sherron
Marcus
Ms. Cindy Cox
Marion Sharkey
Ms. Suzanne Mowbray
Mary Gillooly's 50th Birthday
Bill and Chris Truitt
Mike Levitt
Patricia Levitt
Monica Bertsch
Mr. John Bertsch
Mr. & Mrs. J
Ms. Helen E. Adler
Nancy Hassett
Mrs. Mary Ellen Novalski
Oliver Rex
Ms. Enid Suarez
Our Dog Crosby
John & Maureen Magee
Reward for Hanged Dog
Dr. Mary T. Greybush
Roscoe and Savannah Stone
The Transportation Station, Inc
Ruby
Lynn Liss
Sarah Snyder
Steven Snyder
Sister Chris Michener's Birthday
Ms. Leanora E. Pennington
Star (a PSPCA adoptable dog)
Nicole and John McEwan
Suki
Ms. Jennifer Wojcik
Tinker
Ms. Ilene Brouda
Whitney
Mr. and Mrs. Thomas C. Abbott
AFF, Larkin, Rajah
Ms. Linda Nestor
Alex Durham
Caroline Durham
Angie
Ms. Theresa Hines
Barette Vance
Meryl and Gerry Greene
Birthday of Lynne Abraham
Mrs. Suzanne Root
Blondie
Ms. Sue Broden
Bruno & Reggie
Kristen McCabe
Captain Ahab
Ms. Patricia Levitt
Darlene O'Hara
Mr. Osman O'Hara
Debbie Pool
Mr. and Mrs. Bradley A. Luck

*Gifts processed as of
February 29, 2008

Good Dog Gala Fetches More Than \$100,000 for PSPCA

The PSPCA thanks all who attended and supported the second annual Good Dog Gala. The event, held at the Loews Philadelphia on February 23, raised more than \$100,000 for the PSPCA's programs. Guests and many canine companions walked the red carpet and helped us pay tribute to five individuals who have helped in our efforts to care for the Commonwealth's stray, injured, abused and unwanted animals: Philadelphia District Attorney Lynne Abraham; CBS 3 reporter and meteorologist Carol Erickson; *Philadelphia Inquirer* reporters Robert Moran and Amy Worden; and Attorney Catherine Hamilton, Esq., an associate in the Philadelphia office of Cozen O'Connor.



Daryl and Felicia D'Ippolito with Tsar and Blossom

Thank you to our Gala Sponsors:

Leader of the Pack

ASPCA
Marsha & Jeffrey Perelman
Michelle Thomson

Champion

Alpha Dog Marketing
Doggie Style
Wilmington Trust

Tail Wagger

Christine Armitage
Jeff & Shauna Binswanger
Buzzy's Bow Wow Meow
Carol Dolinkas
Patricia Hamilton
Legg Mason Investment Counsel
Gloria & Robert Young

Best Friend

Barbara & Geoffrey Braden
Mac & Craig Brand
Mark & Jodi Buyyounouski
John & Nancy Decker
Shirleyann Haveson
Patricia P. Hueber
Rachel McCrystal & Dan Featherston
Leslie Miller & Richard Worley
Amy Norr & Jeff Metz
Mrs. George E. Smith
Susan & Lewis Thayer
Unique Indoor Comfort
Julia Ware



Lynne Abraham and Howard Nelson



Catherine Hamilton



Robert Moran



From left: Serena Cohen, Carol Erickson and Moose, Cohen's Bernese Mountain Dog



Amy Worden and PSPCA Board President Richard Sperry